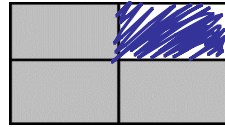


Understanding Percents

4.2 Fractions, Decimals and Percents

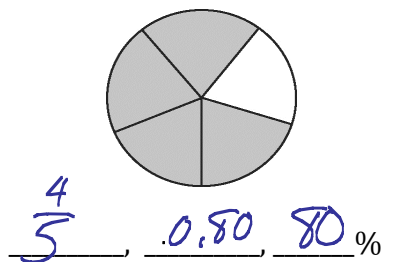
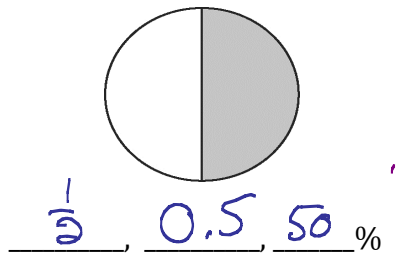
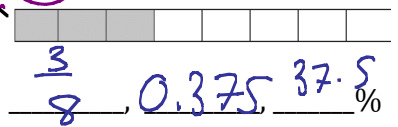
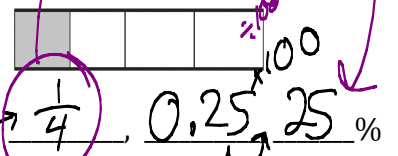
This diagram represents $\frac{3}{4}$
 This fraction is 0.75 or 75 % of the square.



$\frac{1.0}{100\%}$

To change a decimal to a percent, multiply by 100 and add a percent symbol.

Show each diagram as a fraction, a decimal, and a percent.



Fractions, decimals and percents can be used to represent numbers in various situations

Percent means out of 100, so 3 % = $\frac{3}{100}$

0.19 means 19 out of 100, so 0.19 = 19 %

Fill in the blanks to convert each fraction to a percent.

$$\frac{1}{4} = \frac{1 \div 4}{1 \div 4} = \frac{25}{100} = \underline{25} \%$$

$$\frac{3}{5} = \frac{60}{100} = \underline{60} \%$$

$$\frac{17}{20} = \frac{85}{100} = \underline{85} \%$$

$$\frac{93}{200} = \underline{46.5} \%$$

($93 \div 200$) $\times 100$

no decimals
in
fractions

Fill in the blanks to convert each percent to a fraction in lowest terms

$$80\% = \frac{80}{100} = \frac{8 \div 2}{10 \div 2} = \frac{4}{5}$$

$$250\% = \frac{250}{100} = \frac{25 \div 5}{10 \div 5} = \frac{5}{2}$$

$$12.5\% = \frac{12.5}{100} = \frac{125 \div 25}{1000 \div 25} = \frac{5}{40} = \frac{1}{8}$$

$$0.66\% = \frac{0.66}{100} = \frac{66 \div 2}{10000 \div 2} = \frac{33}{5000}$$

Try this

Fraction	Decimal	Percent
$\frac{13}{100} *$	0.13 $\times 100 \rightarrow$	13%
$\frac{23}{100}$	0.23 $\leftarrow \div 100$	23%
$\frac{47}{100} \quad 47 \div 100 \rightarrow$	0.47	47%
$\frac{101}{100}$	1.01 $\times 100 \rightarrow$	101%
$\frac{125}{1000} = \frac{1}{8}$	0.125 $\leftarrow \div 100$ (12.5)	12.5%
$\frac{4}{5} \quad 4 \div 5$	0.8 $\times 100 \rightarrow$	80%

Practice:

Fraction	Decimal	Percent
$\frac{25}{100} = \frac{1}{4}$	0.25	25%
$\frac{123}{100}$	1.23	123%
$\frac{86}{100} = \frac{43}{50}$	0.86	86%
$\frac{82}{100} = \frac{41}{50}$	0.82	82%
$\frac{13.25}{100} = \frac{1325}{10000} = \frac{53}{400}$	0.1325	13.25%
$\frac{7}{8}$	0.875	87.5%

